

CLASS 4 TRAILER HITCH

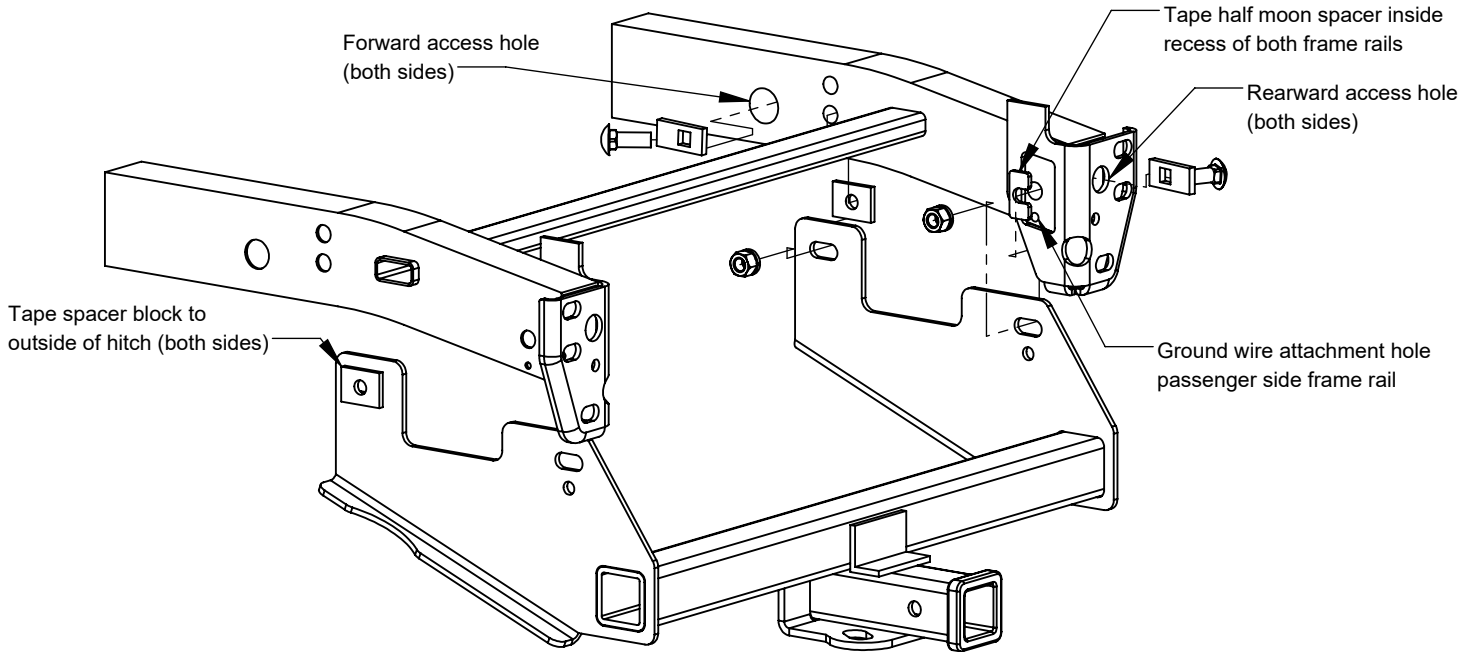
R3-0479

Ford F 150

TOOLS REQUIRED: Masking Tape
WRENCHES: Ratchet, Torque Wrench,
Sockets: 15/16", 13mm, 10mm

HITCH RATING: 6,000 LBS WEIGHT CARRYING, 600 LBS TONGUE WEIGHT / 12,000 LBS WEIGHT DISTRIBUTING, 1,200 LBS TONGUE WEIGHT.
WARNING: CONSULT VEHICLE OWNERS MANUAL FOR TOWING RECOMMENDATIONS. DO NOT EXCEED VEHICLE'S RECOMMENDED TOWING CAPACITY. THIS PRODUCT IS DESIGNED FOR TRAILER TOWING ONLY AND SHOULD NOT BE USED FOR ANY OTHER PURPOSE.

NOTE: INSTALL PARTS LOOSELY UNTIL ALL ATTACHMENTS HAVE BEEN MADE TO VEHICLE



1. If present, remove the ground wire from the rear of the passenger side frame rail and return fastener to vehicle owner. Lower the spare tire for hitch installation.
2. Tape a round hole spacer to the outside of the hitch centered on the forward mounting slots on both sides. Tape a half moon spacer to the inside of each frame rail in the recessed area at the rearward attachment point. Note: on the passenger side frame rail do not obstruct the ground wire mounting hole.
3. Using the fish wires provided, insert the carriage bolts and block plates into the frame rails through the access holes shown above. Leave the hardware inside the frame rails with fish wires attached.
4. Raise the hitch into position feeding the fish wire ends through the mounting slots of the hitch. Pull the carriage bolts through the frame rail and the hitch mounting slots. **Note: on the driver's side hold the wiring harness out of the way to avoid pinching wires.**
5. Remove the fish wires. Using care not to push the hardware back into the frame rails thread a flange nut onto each carriage bolt finger tight.
6. Ensure the hitch is centered and level. Tighten all four 5/8-11 flange nuts to 160 LB-FT.
7. If the ground wire was removed in Step 1, reattach it to the passenger side frame rail using the M8 hex bolt and flat washer provided. Tighten to 20 LB-FT.
8. Raise spare tire back into position.

Thank you for purchasing a Rigid Hitch

Hardware Package:

(4) 5/8-11 x 1-3/4" Gr8 carriage bolts	(2) 1/4 x 1-1/2 x 2" round hole spacers
(4) 5/8-11 Gr8 flange nuts	(2) 3/16 x 1 x 2" half moon spacers
(4) 5/16 x 1-1/8 x 2-1/2" block plates	(1) M8-1.25 x 30 Cl 8.8 hex bolt
(4) 5/8-11 fish wires	(1) 5/16" flat washer

GIVE THIS INSTRUCTION SHEET TO VEHICLE OWNER



THIS PRODUCT COMPLIES WITH SAFETY SPECIFICATIONS AND REQUIREMENTS FOR SAE J684 AND VESC REGULATION V-5 FOR CONNECTING DEVICES AND TOWING SYSTEMS. DO NOT MODIFY THIS PRODUCT. INSTALL ONLY ON SPECIFIED VEHICLES IN GOOD CONDITION.

RIGID[®]
HITCH INCORPORATED
3301 WEST BURNSVILLE PARKWAY
BURNSVILLE, MN 55337

REV.
7/18