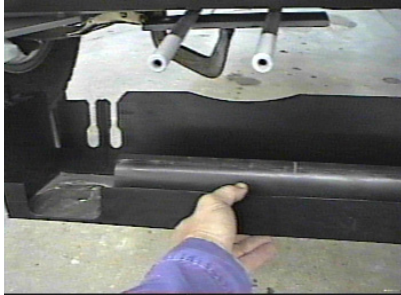




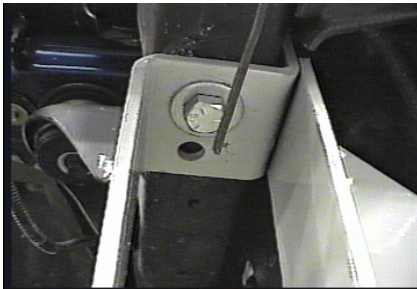
Strong As An Ox™

Installation Instructions BX2157 2001-04 Ford Ranger XLT, 4.0L V6, 4WD 2001-03 Ford Ranger Edge, 2/ 4wd

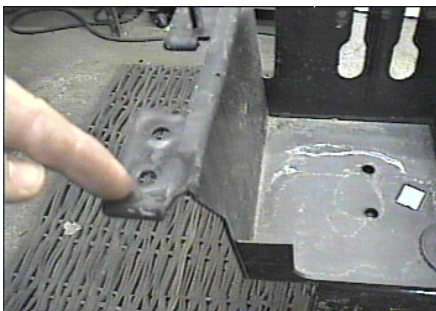
The front bumper is removed for baseplate installation. The lower plastic rock guard, from the front only, is temporarily removed and trimmed. Holes need to be drilled. The attachment tabs are centered at 24 inches.



1. Remove the four bolts from belly pan, a 10mm Socket is needed. Set belly pan aside.



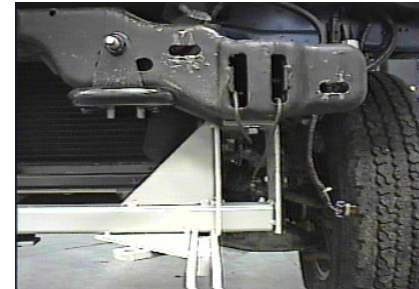
3. Align Base Plate front holes with existing holes on bottom side of frame ends. Using items 2, 4, and 5 to hold Base Plate into position, mark back holes with transfer punch. Remove Base Plate and drill hole on each side using 17/32 inch bit.



5. Hold belly pan in place, mark and trim to fit, (Refer to photo to the right), then replace bumper and belly pan. Be sure all electrical fixtures are connected and tighten all bolt according to manufacturer recommendations Baseplate installation is complete.



2. There are four bolts to remove from the back side of bumper, 18mm Socket is needed. Disconnect all electrical fixtures and set bumper aside.



4. Install Base Plate according to assembly drawing on last page. Be sure and use Loctite on all bolts before tightening. Tighten all bolts according to torque chart in the General Instruction sheet.

6. Install the tow bar and safety cables according to the instructions included in their respective packaging.
7. **DO NOT** substitute other devices if the tow bar pins or clips are lost. Use only Blue Ox replacement parts.
8. **DEALER OR INSTALLER: BE CERTAIN THE USER RECEIVES THE INSTRUCTION SHEET.**

Tools Required

10MM Socket
18MM Socket
Vise Grips

Loctite Blue
3/4" Wrench
Transfer Punch

17/32" Drill Bit
Drill

Parts List

Ref. No.	Qty.	Part No.	Description
1	1	61-5568	Weldment, Baseplate, BX2157
2	4	61-4029	Weldment, 1/2" Nut Wire
3	2	61-5159	Weldment, 1/2" Nut Plate
4	6	201-0051	1/2-13 x 1 1/2" Hex Bolt, Grade 5
5	6	203-0012	1/2" Lock Washer
6	4	203-0005	1/2" Flat Washer
7	2	101-5822	Adapter, 4 Way Connector
8	2	201-0192	#10-32 x 1/2 Screw
9	2	203-0054	#10 Lock Washer
10	2	202-0047	#10-32 Hex Nut
11	2	201-0979	#12-14 x 1" Self Drilling Screw, ZP
	2	226-0049	Baseplate Safety Cable, 36" CL IV (NS)
	4	229-0512	Quicklink, 1/2, ZP (Not Shown)

IMPORTANT: Use only genuine factory replacement parts on your Tow Bar. Do not substitute homemade or nontypical parts. If a bolt is lost or in need of replacement, for your safety and the preservation of your Tow Bar, be sure to use a replacement bolt of the same grade (Usually Grade 5, refer to parts list).

Repair parts may be ordered through your nearest Blue Ox dealer or distributor.

